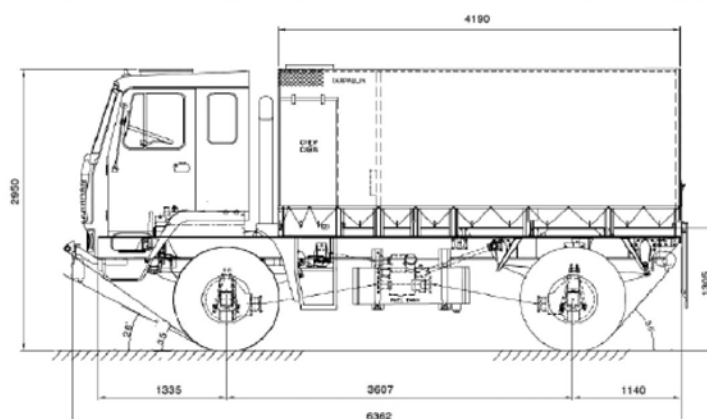


TOPCHI 4X4 FAT



Technical Specifications

ENGINE

Model	: 412 TCAC
Max output	: 117 kW @ 2400 rpm
Max torque	: 587 Nm @ 1350 rpm

GEARBOX

Model	: S6 36
Type	: 6 speed synchromesh
No. of speeds	: 6 Fwd and 1 Rev

AUXILLIARY GEAR BOX

Ratio	: High	Low
	: 1.00:1	2.147:1
Drive	: Disengagable front drive	

PROPELLER SHAFTS

Series	: 1600 Series - 3 Nos
--------	-----------------------

FRONT AXLE

Type	: Fully floating pressed drive axle with steerable ends
Ratio	: 5.833:1
Capacity	: 7500 kgs

REAR AXLE

Drive	: Fully floating with diff lock operated through electric switch at driver's cab
Ratio	: 5.833:1
Capacity	: 10200 kgs

SPRINGS

Type	: Semi elliptic multi-leaf with double acting telescopic shock absorber
------	---

FRAME

Type	: All-steel, ladder type, bolted
------	----------------------------------

STEERING

Type	: Integral power steering
------	---------------------------

WHEELS & TYRES

Size	: 12.00 x 20-18 PR - Singles
------	------------------------------

BRAKES

Type	: Dual line, direct air pressure on all wheels
Parking Brake	: On axle assy
Exhaust Brake	: Butterfly type valve

DRIVER'S CABIN

Roomy, tiltable driver's cabin with observation hatch

CREW CABIN

6 seater with observation hatch, mounting brackets for guns

WEIGHTS (Kgs)

	FAW	RAW	TOTAL
Unladen	: 4220	2920	7140
GVW	:		10200

MAJOR DIMENSIONS (MM)

Wheelbase	: 3607
Front overhang	: 1335
Rear overhang	: 1140
Overall length	: 6362
Ground clearance	: 305

PERFORMANCE DATA

Maximum speed	: 82 Kmph
Maximum gradeability	: 25 deg

LOAD BODY

Dimensions	: 4190 x 2444 x 1555 mm (LxWxH)
------------	---------------------------------

OPTION

Other engine option available
In-house made cabin available



ASHOK LEYLAND

No 1 Sardar Patel Road, Guindy, Chennai - 600 032, India Ph: (91) 44-22206000 Fax: (91) 44-22206001 www.ashokleyland.com

